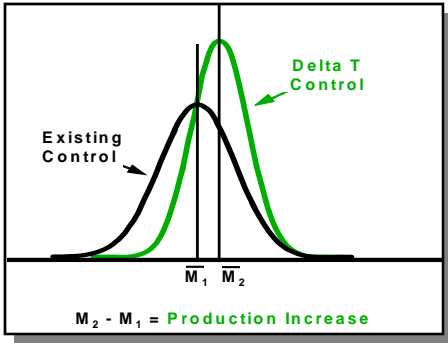
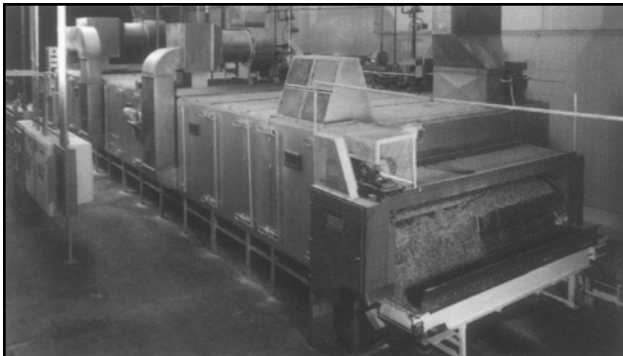
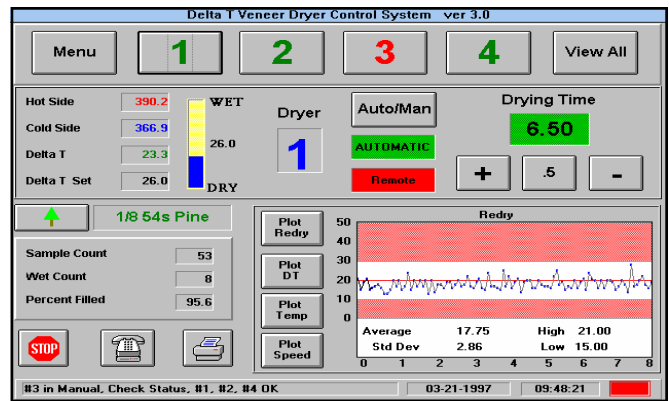


# Delta T Moisture Control Technology



## Inside-the-Dryer Moisture Sensing and Control

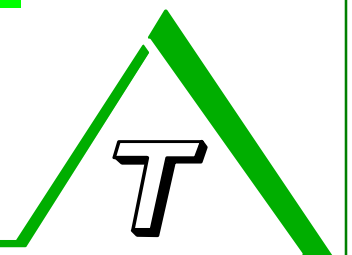
**Total Solution  
Moisture Control  
for all Dryers and  
all Industries**



## On-Line Water Activity Control

[www.moisturecontrols.com](http://www.moisturecontrols.com)  
[drying@moisturecontrols.com](mailto:drying@moisturecontrols.com)

***Drying Technology, Inc.***  
P.O. Box 1635 Silsbee, TX 77656  
Tel: 409-385-6422 Fax: 409-385-6537



## Benefits

**Increased Production** - increases production rate

**Improvement in Quality** - narrows moisture content distribution

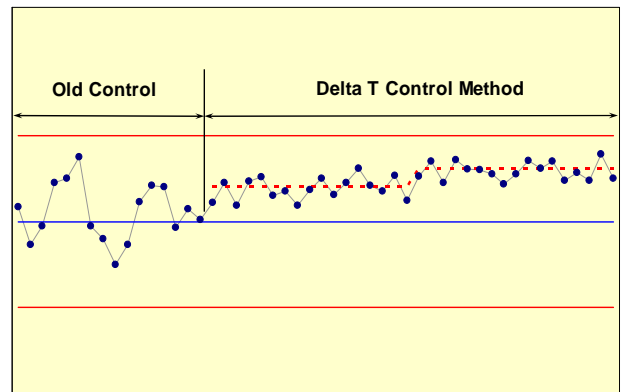
**Reduction in Energy Consumption** - eliminates overdrying

**Sell more Water** - by increasing mean moisture content

**Unique Inside the Dryer Moisture Sensor:** Moisture is sensed inside-the-dryer using two temperature sensors and a patented, first principles model relating moisture to the temperature drop (delta t) of hot air after contact with the wet product and the dryer speed or production rate (S). Calibration is not required. Uses cruise-control startup.

## Continuous Optimization

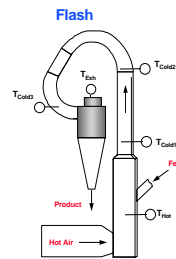
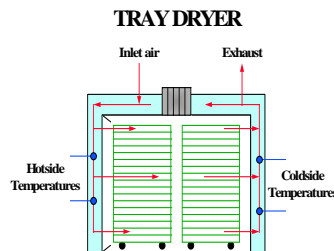
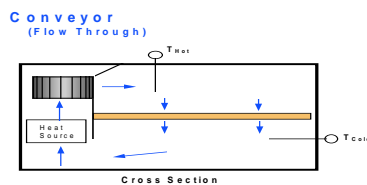
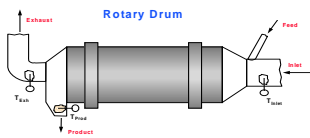
The Old control method produces product with a wider moisture variation (left side of chart). Under Delta t control, the moisture variation is reduced from 30 and sometimes up to 45% which allows the mean MC to be increased by 1/2 to 1.0% without exceeding the upper specification limit. Standard deviation calculations of the exiting product MC are continually made and used as the basis for forcing the mean MC to within two or three standard deviations of the upper specification limit (shown by the dashed line shifting upward).



## Applicable to all Dryers and Industries

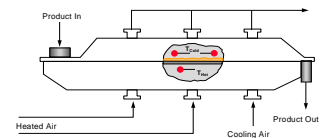
### Industries (partial list)

Wet Corn Milling  
Food & Kindred Products  
Forest Products  
Coating Operations  
Petfood



### Selected Customers

ADM.  
Georgia-Pacific Corp.  
Kraft Foods  
Cargill, Inc.  
International Paper.



Drying Technology, Inc was established in the mid 1980's to serve the industrial drying community. The main office is located in the Silsbee, TX . Sales and technical support may be obtained at the main office.